

LET'S BUILD THE GREEN PORT OF THE FUTURE TOGETHER

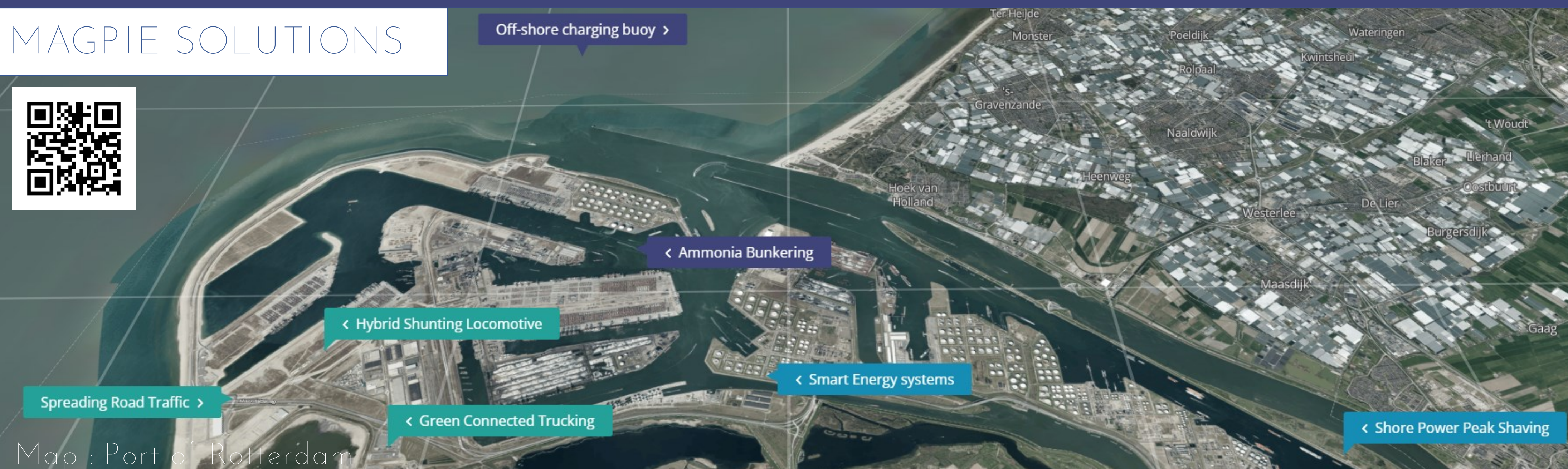
www.magpie-ports.eu



contact@magpie.eu

We want to demonstrate technical, operational, and procedural energy supply and digital solutions in a living lab environment to stimulate green, smart and integrated multimodal transport. The aim is to ensure roll-out through the European Green Port of the Future Master Plan and through dissemination and exploitation activities.

MAGPIE SOLUTIONS



Greening transport is one of the objectives of the European Green Deal. Transport accounts for 25% of the EU's GHG emissions. The objective is to reduce the GHG emissions of transport by 90% by 2050.

ENERGY REQUIREMENTS & SUPPLY CHAINS

MARITIME AND INWAY WATER TRANSPORT

LAND TRANSPORT

DIGITAL TOOLS

- E-methanol production
- Shore power peak shaving
- Smart Energy Systems

- Ammonia Bunkering
- Offshore charging Buoy
- Autonomous e-barge & transhipment
- Green Energy Container

- Hybrid shunting locomotive
- Green Connected Trucking
- Spreading Road Traffic

- GHG Tooling
- Green Energy matching
- Smart Green Logistics

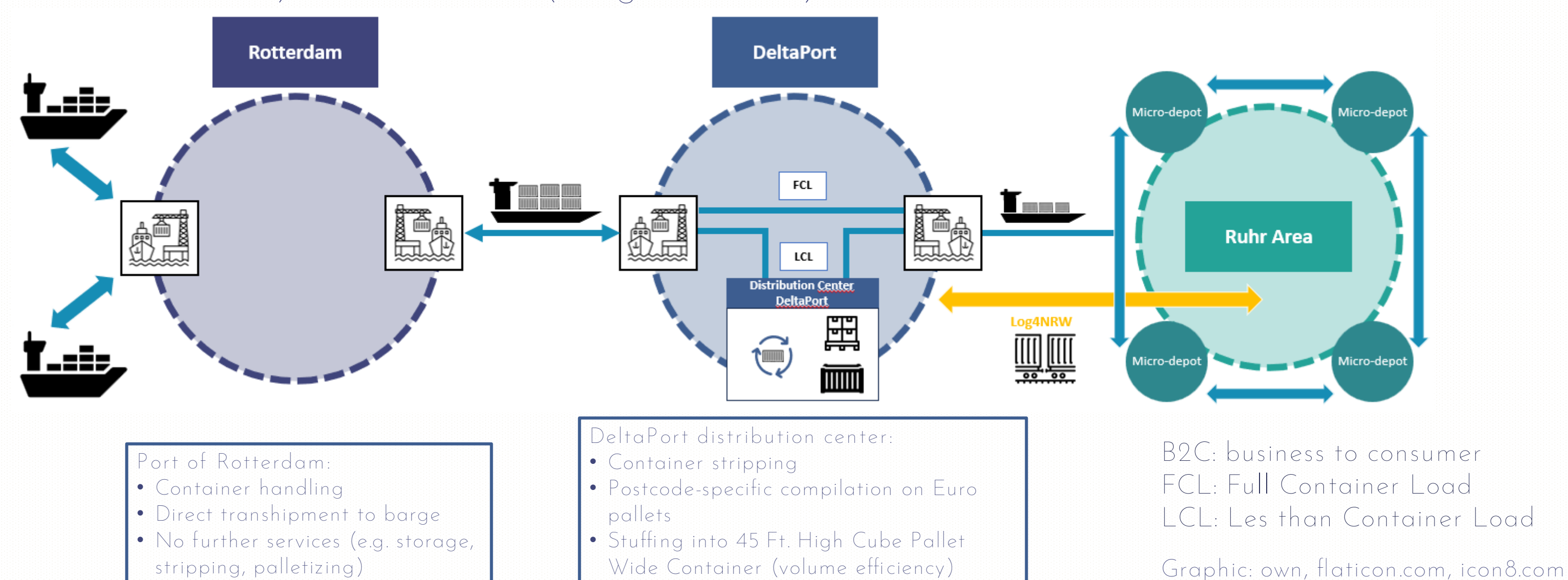
Examples of river and hinterland solutions

WP 6.4: Innovative Container Transport Concept

Objective: Development of sustainable synchro modal transport on hinterland connections

Logistical model:

- Creation of a competitive inland waterway transport supply chain for inbound consumer goods containers (B2C) along the Rotterdam - Ruhr Area route via DeltaPort
- Synchromodal hinterland connections by integrating Log4NRW (German project; rail focused) and MAGPIE (barge focused)



Demo 9: Automated trucking

Objective: the truck will perform various manoeuvres itself in a specially marked-out zone and allow drivers to focus more on their work outside this area

Additional features:

- The truck is being tested to be autonomous in driving to a charging point where it can be recharged automatically. The charging robot will be autonomous as well.
- The loading process is also being automated - the truck will drive, without a driver, to the loading bay in the port.



Our partners

